

## EXHIBIT W

### Identification of Wetlands

Company: \_\_\_\_\_

Development: \_\_\_\_\_

Development Location: \_\_\_\_\_

County: \_\_\_\_\_ Acres: \_\_\_\_\_

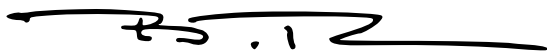
\_\_\_\_\_ I certify that the development listed above **does not** contain jurisdictional and non-jurisdictional wetlands.

\_\_\_\_\_ I certify that the development listed above **does** contain jurisdictional and/or non-jurisdictional wetlands and the proposed development will not disturb the wetlands. The wetlands are \_\_\_\_\_ (acres) in size, rendering the buildable percentage at \_\_\_\_\_%.

I have provided the following:

1. National Wetlands Inventory (NWI) map
2. My credentials that qualify me to make this determination.

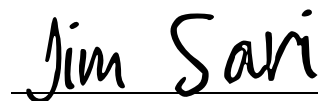
**Financial Interest:** Neither I nor the company I work for have any financial interest in the proposed LIHTC application other than in the practice of our profession.



\_\_\_\_\_  
Signature and Certification of Wetlands Professional

\_\_\_\_\_  
Date

\_\_\_\_\_  
Name of Wetland Professional

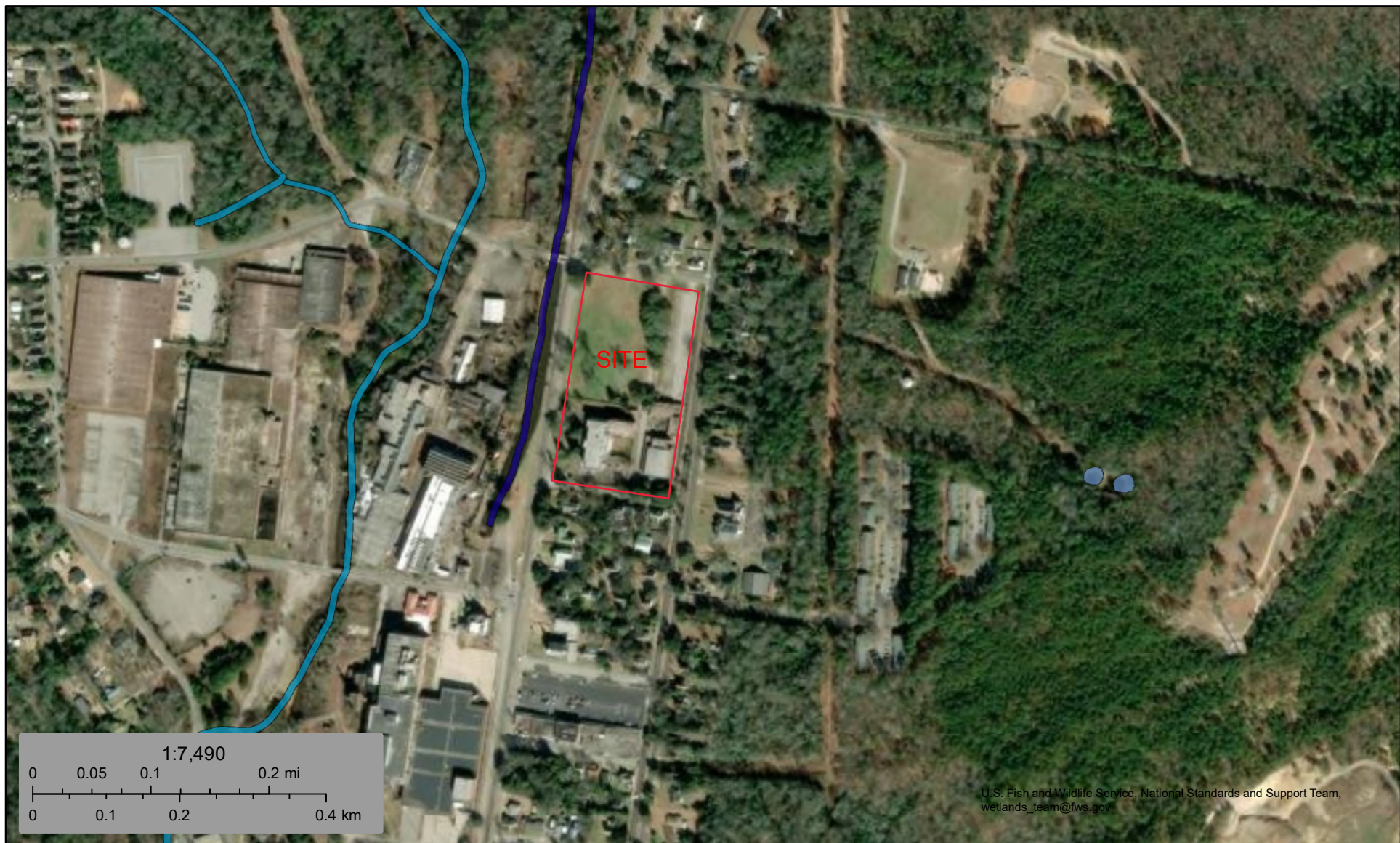


\_\_\_\_\_  
Signature and Certification of Development Owner

\_\_\_\_\_  
Date






\_\_\_\_\_  
Name of Developer

Figure 3 - NWI Map



October 10, 2024

### Wetlands

	Estuarine and Marine Deepwater		Freshwater Emergent Wetland		Lake
	Estuarine and Marine Wetland		Freshwater Forested/Shrub Wetland		Other
			Freshwater Pond		Riverine

This map is for general reference only. The US Fish and Wildlife Service is not responsible for the accuracy or currentness of the base data shown on this map. All wetlands related data should be used in accordance with the layer metadata found on the Wetlands Mapper web site.

## B. THOMAS HOUGHTON, PG

### CURRENT POSITION

*Swift Creek Environmental, Inc.*  
President  
1994-Present

### PROJECT EXPERIENCE/RESPONSIBILITIES

Manages proposal preparation, budgeting, cost analysis, business development, corporate planning, scheduling, field work, data analysis, report writing, ground water modeling and remediation design. Specific field experience includes: Delineation and remediation of pesticide/herbicides contaminants incorporated in surface and subsurface soils; Containerization and remediation of sodium hydroxide and MEK spills; Burial recovery and disposal of drums containing low grade radioactive materials, PCB oil's, diesel fuels, motor oils, and volatile organic solvents; Evaluation of potential risks and damage to the surrounding environment resulting from methane gas migration at landfills; Nutrient management and groundwater/soil leachability studies for sanitary, agricultural and industrial lagoons; Coal mine delineations; Water resource investigations; Characterization, removal and disposal of hazardous sludges; Delineation of a 2,000,000 gallon gasoline subsurface spill at an AST facility; Delineation of carcinogenic materials spilled at airline crash sites; Soil and ground water remediation of heavy metal contamination at RCRA facilities; Permanent closure of USTs; Assessments and clean-ups of LUST sites; Phase I and Phase II Site Assessments; Radioactive site Investigations; Lead Brownfields Contractor; State VRP and HSI Site Investigations and Clean-ups, Compliance Audits; Well Point Designs, Wetland delineations, designs and constructions; Hydrogeologic modeling for potential potable water usage, Municipal water supply studies; Contaminant transport modeling, Hurricane Isabel and Gloria Environmental Disaster Relief for the Virginia Department of Environmental Quality, Virginia State Lead LUST Contractor 1999-2004; Wildlife Studies, Macroinvertebrate Identification Studies; Stream Quality Studies, Storm Water Compliance Investigations /Maintenance/Repair, Sound Studies, HOME/HUD Lead Environmental Investigator, Property Condition Assessments

### PREVIOUS EMPLOYMENT

*GES Environmental Services, Inc.*  
*Richmond, Virginia*  
Senior Project Manager  
1990 - 1994

*Soil Mechanics Environmental Services*  
*Seaford, New York*  
Geologist/Project Manager  
1985 - 1990

### EDUCATION

*State University of New York at Oswego*  
Oswego, New York - B.S. Geology 1985

### PROFESSIONAL DEVELOPMENT

*SC Geological Symposium*  
Clemson, SC April 2018

*Sustainable Ground Water*  
Las Vegas, Nevada, 2006, 2008

*NGWA Expo*  
Las Vegas, Nevada, 2004, 2006, 2008, 2010, 2011, 2012, 2014, 2016

*Virginia Brownfields*  
Harrisonburg, Virginia 2011

*Water Resources*  
Las Vegas, Nevada 2010

*Geochemistry of Ground Water*  
Las Vegas, Nevada, 2004

*Focus Conference on Eastern Ground Water Issues*  
Burlington, Vermont, 1993

*Focus Conference on Eastern Ground Water Issues*  
Boston Mass., 1992

*Overview of the Federal, State and Local Regulatory Programs Governing Storage Facilities*  
Uniondale, New York, June 1990

*Ground Water Aspects of Tanks and Spills*  
West Chester, Pennsylvania, March 1990

Speaker: *American Tire Association, Virginia Landmark, and Bower Nelms*, 1994-1998  
*Aspects of USTs and ASTs - PHASE I Environmental Aspects - Risks To Human Health* 1994, 1996, 1998

### CERTIFICATIONS

Certified Professional Geologist, No. 2542, Tennessee, 1992  
Certified Professional Geologist, No. 950, Virginia, 1993  
Certified Professional Geologist, No. 1291, North Carolina, 1994  
Certified Professional Geologist, No. 2029, Florida, 1998  
Certified Professional Geologist, No. 2343, South Carolina, 2003  
Eight Hour OSHA Health and Safety Refresher Training (29 CFR 1910.120), 1990-2019  
Forty Hour OSHA Health and Safety Training Course (29 CFR 1910.120), 1987  
Army Corps of Engineers Certified Wetland Delineator, 1999  
HUD Environmental Training Certification, 2009